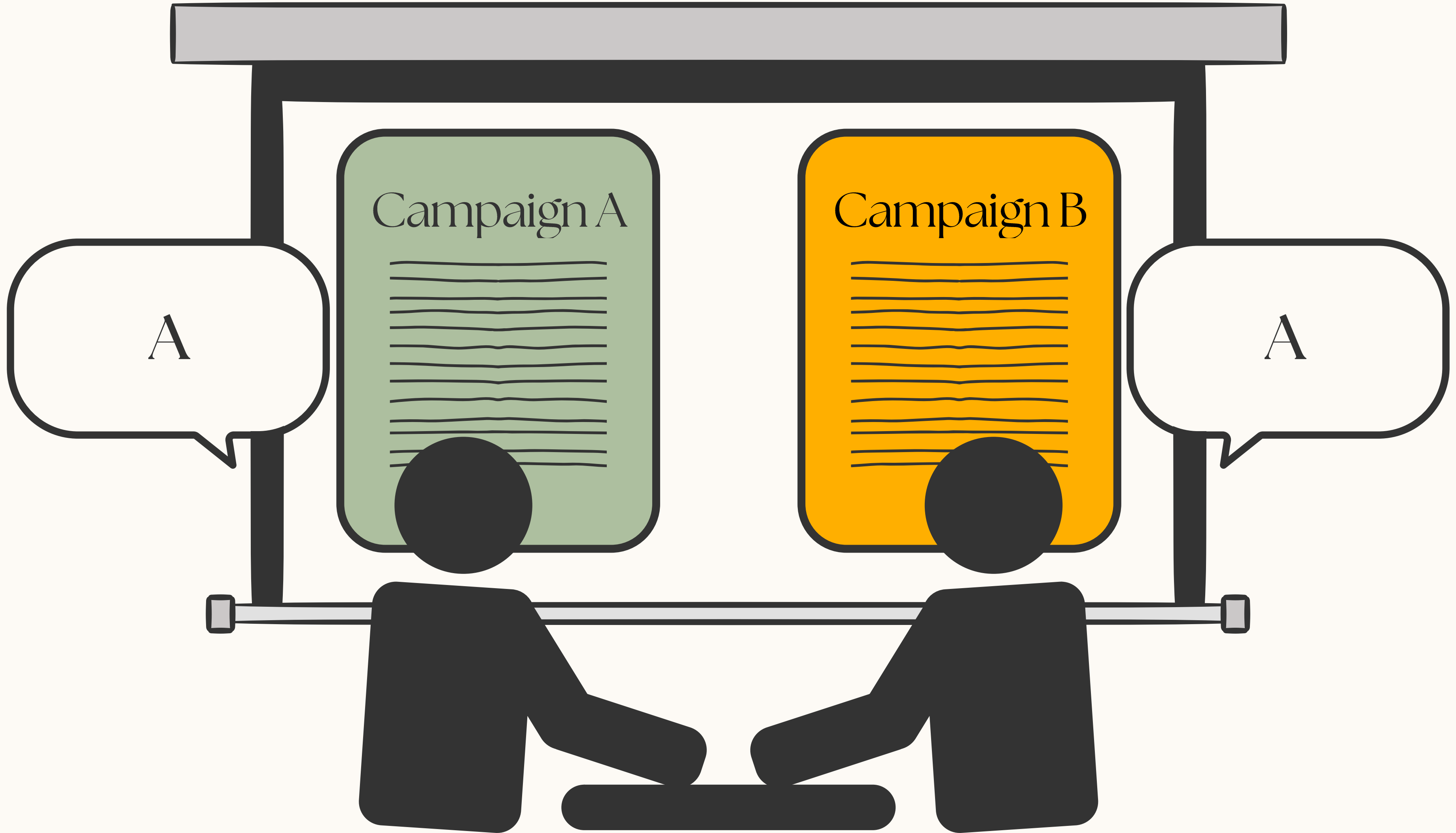
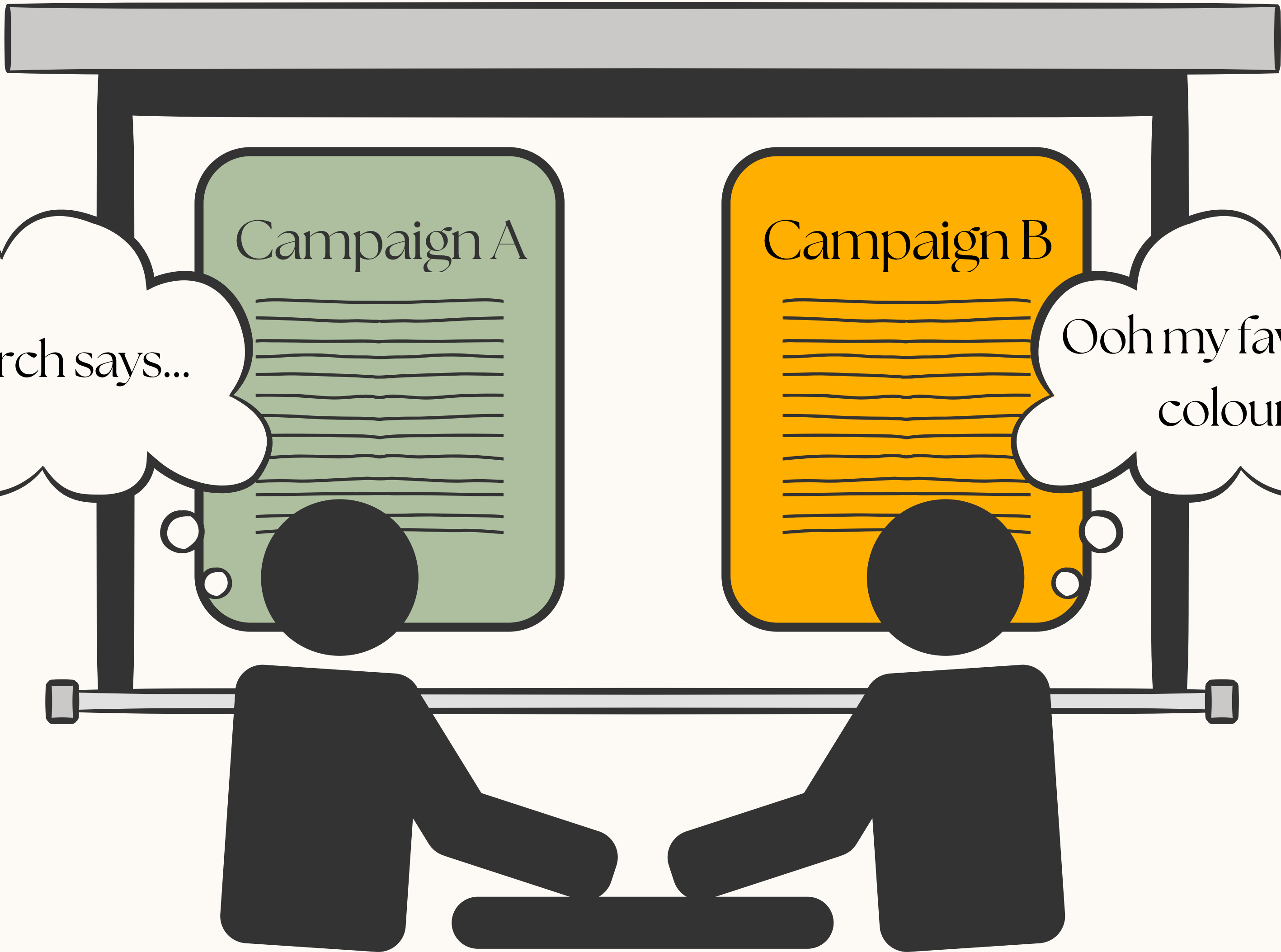


Degrees of Agential Substantive (Ir)Rationality

Crystal Seet, University of Wisconsin-Madison
Agency and Intentions in Language 5





Campaign A

Campaign B

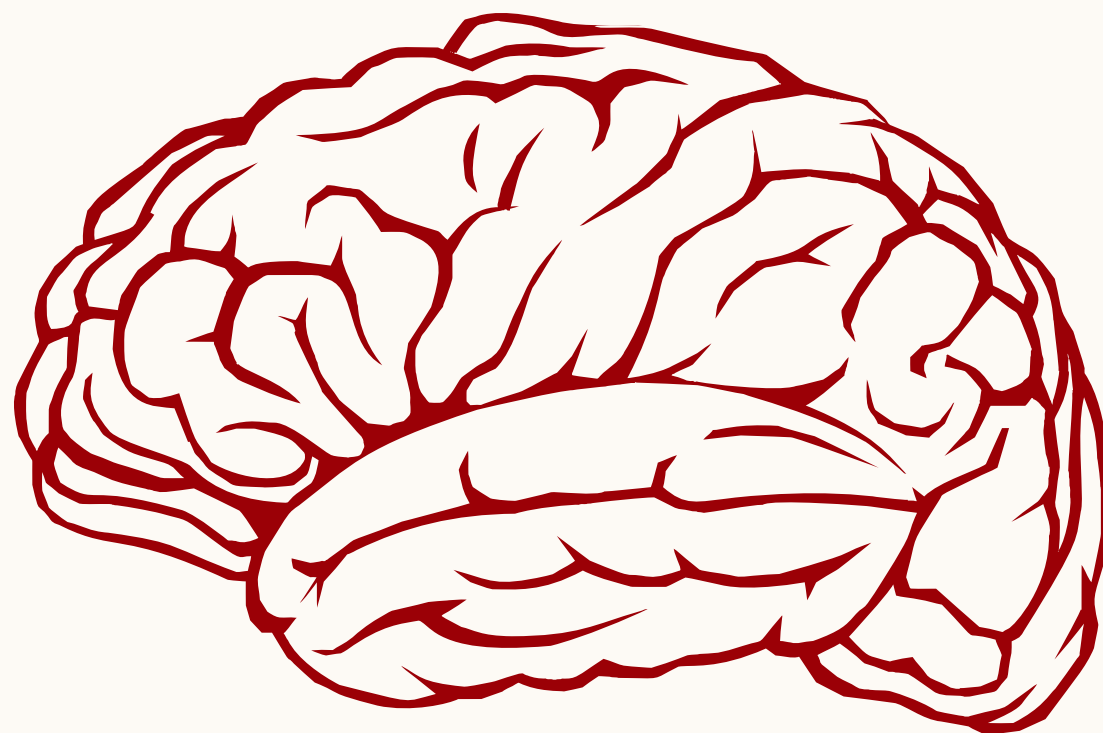
Research says...

Ooh my favourite colours!



The Balancing View

S's degree of substantive irrationality is determined by the total weight of reasons against each of S's attitudes



The Reasoning View

One's degree of substantive irrationality is determined by the quality of one's substantive reasoning.



Thank You

